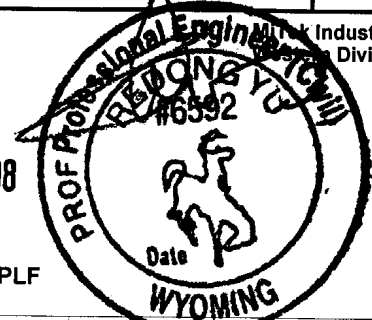




GENERAL NOTES:

1. UPLIFT AND LATERAL LOAD CAPACITY OF THIS DETAIL SHALL BE REVIEWED AND APPROVED BY PROJECT ENGINEER OR QUALIFIED BUILDING DESIGNER.
2. PITCH=6/12 MAX
3. MAX SPAN = 30'-0"
4. MAXIMUM SHEAR CAPACITY OR LATERAL LOAD TRANSFER BETWEEN PIGGYBACK AND BASE TRUSS= 120 PLF

APR 10 2008



TYPICAL PIGGYBACK TRUSS CONNECTION

- * 2 x x 6'-0" SIZE TO MATCH TOP CHORD OF PIGGYBACK. ATTACHED TO ONE FACE OF TOP CHORD WITH 2 ROWS OF 10d (0.131" X 3") NAILS SPACED 6" O.C. AND STAGGERED

MAXIMUM UPLIFT SCAB CAPACITY USING (10) 10d (0.131" X 3") NAILS:

- SYP = 1060 LBS
- SPF = 820 LBS
- DF = 970 LBS
- HF = 840 LBS
- SPF-S = 720 LBS

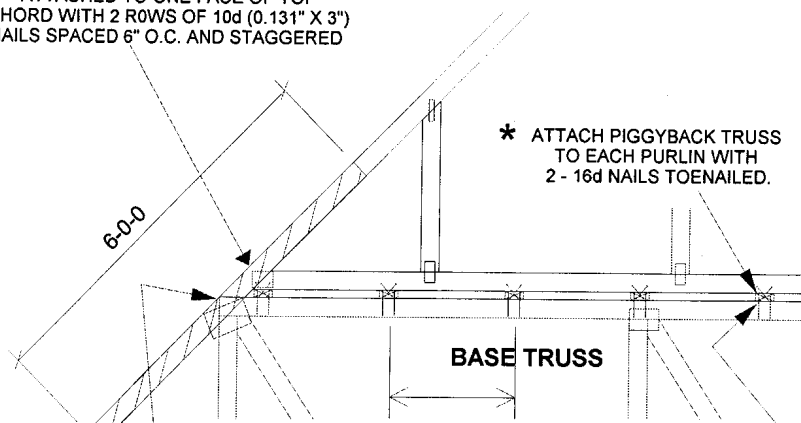
MAXIMUM UPLIFT PURLIN CAPACITY USING (2) 16d (0.131" X 3.5") NAILS:

- SYP = 117 LBS
- SPF = 60 LBS
- DF = 92 LBS
- HF = 63 LBS
- SPF-S = 41 LBS

MAXIMUM UPLIFT SHEATHING CAPACITY USING 1/2" SHEATHING AND (2) 8d (0.131" X 2.5") NAILS:

- SYP = 82 LBS
- SPF = 42 LBS
- DF = 64 LBS
- HF = 44 LBS
- SPF-S = 28 LBS

VALUES SHOWN ARE BASED ON LOAD DURATION OF 1.00



- * ATTACH PIGGYBACK TRUSS TO EACH PURLIN WITH 2 - 16d NAILS TOENAILED.

SPACE PURLINS ACCORDING TO THE MAXIMUM SPACING ON THE TOP CHORD OF THE BASE TRUSS (SPACING NOT TO EXCEED 24" O.C.). A PURLIN TO BE LOCATED AT EACH BASE TRUSS JOINT.

ATTACH EACH PURLIN TO TOP CHORD OF BASE TRUSS WITH 2 - 16d NAILS.

- * FOR PIGGY BACK TRUSSES WITH SPANS \leq 12' SCAB MAY BE OMITTED PROVIDED THAT: ROOF SHEATHING TO BE CONTINUOUS OVER JOINT (SHEATHING TO OVERLAP MINIMUM 12" OVER JOINT)

- * CAP CONNECTION IS MADE TO RESIST UPLIFT. SEE MAXIMUM CONNECTION CAPACITIES AND COMPARE WITH ENGINEERING DRAWING CONNECTION CAPACITIES FOR SCABS, PURLINS, AND SHEATHING MAY BE COMBINED WHEN DETERMINING OVERALL UPLIFT CAPACITY.

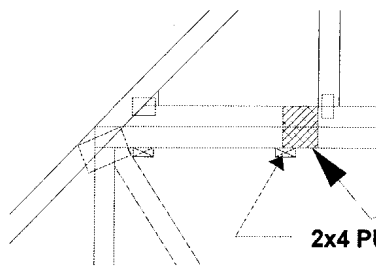
IF NO GAP EXISTS BETWEEN CAP TRUSS AND BASE TRUSS:

REPLACE TOE NAILING OF CAP TRUSS TO PURLINS WITH GUSSETS AS SHOWN, AND APPLY PURLINS TO LOWER EDGE OF BASE TRUSS TOP CHORD AT RECOMENDED SPACING SHOWN ABOVE.

MAXIMUM UPLIFT GUSSET CAPACITY USING 7/16" GUSSETS AND (4) 10d (0.131" X 3") NAILS:

- SYP = 300 LBS
- SPF = 276 LBS
- DF = 294 LBS
- HF = 276 LBS
- SPF-S = 258 LBS

VALUES SHOWN ARE BASED ON LOAD DURATION OF 1.00



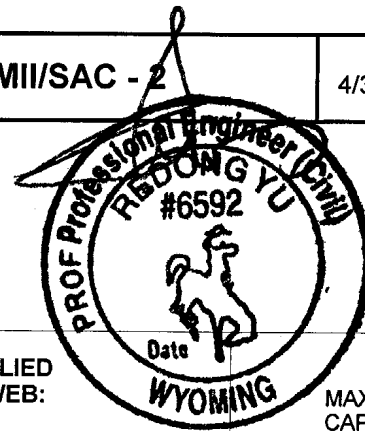
- * 8" x 8" x 1/2" PLYWOOD (or 7/16" OSB) GUSSET EACH SIDE AT EACH BASE TRUSS JOINT. ATTACH WITH 2 - 10d NAILS INTO EACH CHORD FROM EACH SIDE (TOTAL - 4 NAILS EACH CHORD)

2x4 PURLINS @ 24" O.C. ATTACHED W/ 2-10 D NAILS



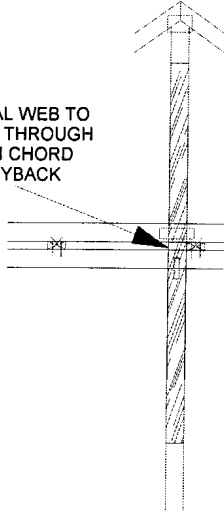


MiTek Industries, Inc.
Western Division



FOR LARGE CONCENTRATED LOADS APPLIED TO CAP TRUSS REQUIRING A VERTICAL WEB:

VERTICAL WEB TO EXTEND THROUGH BOTTOM CHORD OF PIGGYBACK



- 1) VERTICAL WEBS OF PIGGYBACK AND BASE TRUSS MUST MATCH IN SIZE, GRADE, AND MUST LINE UP AS SHOWN IN DETAIL.
- 2) VERTICAL WEBS OF PIGGYBACK MUST RUN THROUGH BOTTOM CHORD SO THAT THERE IS FULL WOOD TO WOOD CONTACT BETWEEN WEB OF PIGGYBACK AND THE TOP CHORD OF THE BASE TRUSS.
- 3) CONCENTRATED LOAD MUST BE APPLIED TO BOTH THE PIGGYBACK AND THE BASE TRUSS.
- 4) ATTACH 2 x ____ x 6'-0" SCAB TO EACH FACE OF TRUSS ASSEMBLY WITH 2 ROWS OF 10d NAILS (0.131"X3") AT 6" O.C. STAGGERED. (SIZE AND GRADE TO MATCH VERTICAL WEBS OF PIGGYBACK AND BASE TRUSS.)
- 5) THIS CONNECTION IS ONLY VALID FOR A MAXIMUM CONCENTRATED LOAD OF 3700 LBS (@1.15). REVIEW BY A QUALIFIED ENGINEER IS REQUIRED FOR LOADS GREATER THAN 3700 LBS.

APR 10 2008

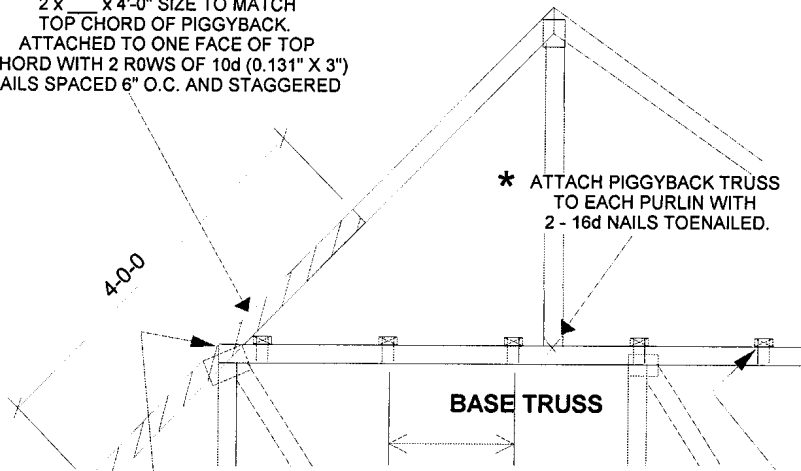
MAXIMUM UPLIFT SCAB CAPACITY USING (10) 10d (0.131" X 3") NAILS:

SYP =	1060 LBS
SPF =	820 LBS
DF =	970 LBS
HF =	840 LBS
SPF-S =	720 LBS

VALUES SHOWN ARE BASED ON LOAD DURATION OF 1.00

PIGGYBACK TRUSS CONNECTION FOR SPANS LESS THAN 10'-0"

* 2 x ____ x 4'-0" SIZE TO MATCH TOP CHORD OF PIGGYBACK. ATTACHED TO ONE FACE OF TOP CHORD WITH 2 ROWS OF 10d (0.131" X 3") NAILS SPACED 6" O.C. AND STAGGERED



* ATTACH PIGGYBACK TRUSS TO EACH PURLIN WITH 2 - 16d NAILS TOENAILED.

SPACE PURLINS ACCORDING TO THE MAXIMUM SPACING ON THE TOP CHORD OF THE BASE TRUSS (SPACING NOT TO EXCEED 24" O.C.). A PURLIN TO BE LOCATED AT EACH BASE TRUSS JOINT.

ATTACH EACH PURLIN TO TOP CHORD OF BASE TRUSS WITH 2 - 16d NAILS.

MAXIMUM UPLIFT SCAB CAPACITY USING (4) 10d (0.131" X 3") NAILS:

SYP =	424 LBS
SPF =	328 LBS
DF =	388 LBS
HF =	336 LBS
SPF-S =	288 LBS

MAXIMUM UPLIFT PURLIN CAPACITY USING (2) 16d (0.131" X 3.5") NAILS:

SYP =	117 LBS
SPF =	60 LBS
DF =	92 LBS
HF =	63 LBS
SPF-S =	41 LBS

VALUES SHOWN ARE BASED ON LOAD DURATION OF 1.00

* CAP CONNECTION IS MADE TO RESIST UPLIFT. SEE MAXIMUM CONNECTION CAPACITIES AND COMPARE WITH ENGINEERING DRAWING CONNECTION CAPACITIES FOR SCABS, PURLINS, AND SHEATHING MAY BE COMBINED WHEN DETERMINING OVERALL UPLIFT CAPACITY.

