

Job NG2	Truss A77	Truss Type ATTIC	Qty 30	Ply 1	Job Reference (optional)
------------	--------------	---------------------	-----------	----------	--------------------------

Teton-Truss Operations, Inc., Etna, WY 83118, Bill Neeb

7.020 s Nov 9 2007 MiTek Industries, Inc. Fri Feb 08 09:39:44 2008 Page 1

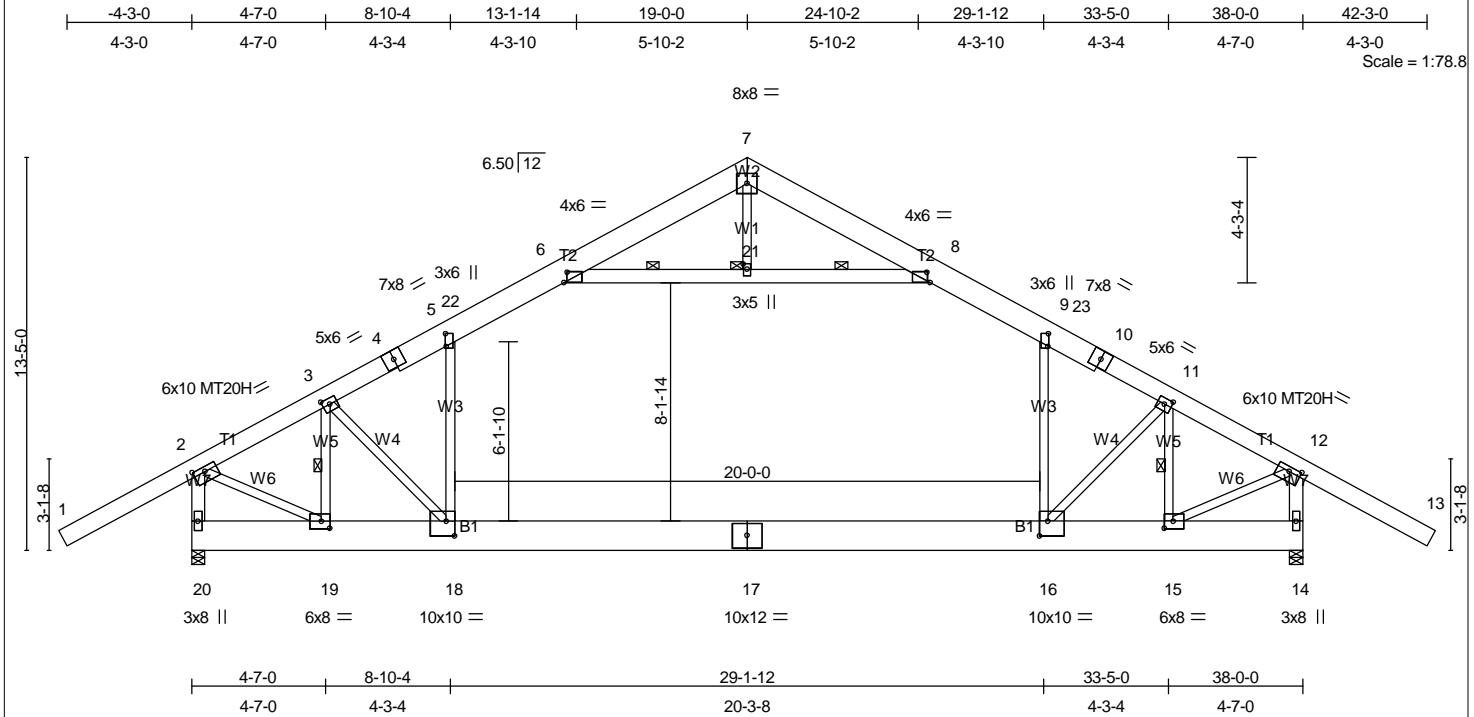


Plate Offsets (X,Y): [2:0-4-12,0-2-0], [3:0-3-0,0-2-4], [5:0-5-3,0-0-4], [6:0-1-5,0-4-4], [8:0-1-5,0-4-4], [9:0-5-3,0-0-4], [11:0-3-0,0-2-4], [12:0-4-12,0-2-0], [15:0-3-8,0-3-0], [16:0-3-8,0-6-0], [18:0-3-8,0-6-0], [19:0-3-8,0-3-0], [21:0-2-4,0-1-8]

LOADING (psf) TCLL 85.0 (Roof Snow=85.0) TCDL 7.0 BCLL 0.0 BCDL 8.0	SPACING 2-0-0 Plates Increase 1.00 Lumber Increase 1.00 Rep Stress Incr YES Code IBC2006/TPI2002	CSI TC 0.96 BC 0.83 WB 0.81 (Matrix)	DEFL in (loc) l/defl L/d Vert(LL) -0.59 16-18 >758 360 Vert(TL) -0.83 16-18 >544 240 Horz(TL) 0.05 14 n/a n/a Wind(LL) 0.07 16-18 >999 240	PLATES MT20 MT20H Weight: 434 lb	GRIP 174/154 165/146
---	--	---	--	--	-----------------------------------

LUMBER

TC 2 X 10 DF SS *Except* T1 2 X 8 DF SS, T1 2 X 8 DF SS
 BC 1.5 X 11.875 Versa-Lam LVL 28F
 W1 2 X 6 DF 1800F 1.6E, W4 2 X 4 DF No.1&Btr, W6 2 X 4 DF No.1&Btr, W4 2 X 4 DF No.1&Btr
 WB 2 X 4 DF Stud/Std *Except* W6 2 X 4 DF No.1&Btr, W7 2 X 6 DF No.2, W7 2 X 6 DF No.2

BRACING

TOP CHORD Structural wood sheathing directly applied.
 BOT CHORD Rigid ceiling directly applied or 3-2-3 oc bracing.
 WEBS 1 Row at midpt 6-21, 8-21, 3-19, 11-15
 JOINTS 1 Brace at Jt(s): 21

REACTIONS

(lb/size) 20=5721/0-6-5 (input: 0-5-8), 14=5721/0-6-5 (input: 0-5-8)
 Max Horz 20=211(LC 6)
 Max Uplift 20=309(LC 7), 14=309(LC 8)
 Max Grav 20=5915(LC 2), 14=5915(LC 3)

FORCES

(lb) - Maximum Compression/Maximum Tension
 TOP CHORD 1-2=0/405, 2-3=-4678/104, 3-4=-5792/7, 4-5=-5490/17, 5-22=-5219/137, 6-22=-5177/158, 6-7=-1423/223, 7-8=-1423/223, 8-23=-5177/158, 9-23=-5219/137, 9-10=-5490/17, 10-11=-5792/6, 11-12=-4678/105, 12-13=0/405
 BOT CHORD 19-20=-211/211, 18-19=-31/3760, 17-18=0/4817, 16-17=0/4817, 15-16=0/3760, 14-15=0/0
 WEBS 6-21=-3944/0, 8-21=-3944/0, 5-18=-43/1316, 9-16=-43/1316, 3-18=-64/2712, 3-19=-3395/0, 2-19=0/4298, 11-16=-65/2712, 11-15=-3395/0, 12-15=0/4298, 2-20=-5812/351, 12-14=-5812/352, 7-21=0/229

NOTES

- 1) Wind: ASCE 7-05; 85mph; h=25ft; TCDL=4.2psf; BCDL=4.8psf; Category II; Exp C; enclosed; MWFRS (low-rise) gable end zone; cantilever left and right exposed; end vertical left and right exposed; Lumber DOL=1.33 plate grip DOL=1.33.
- 2) TCLL: ASCE 7-05; Pf=85.0 psf (flat roof snow); Category II; Exp C; Fully Exp.; Ct=1.1
- 3) Unbalanced snow loads have been considered for this design.
- 4) This truss has been designed for greater of min roof live load of 17.5 psf or 1.00 times flat roof load of 85.0 psf on overhangs non-concurrent with other live loads.
- 5) This truss has been designed for a 10.0 psf bottom chord live load nonconcurrent with any other live loads.
- 6) All plates are MT20 plates unless otherwise indicated.
- 7) Ceiling dead load (5.0 psf) on member(s). 5-6, 8-9, 6-21, 8-21
- 8) Bottom chord live load (40.0 psf) and additional bottom chord dead load (10.0 psf) applied only to room. 16-18
- 9) WARNING: Required bearing size at joint(s) 20, 14 greater than input bearing size.
- 10) Provide mechanical connection (by others) of truss to bearing plate capable of withstanding 309 lb uplift at joint 20 and 309 lb uplift at joint 14.
- 11) This truss is designed in accordance with the 2006 International Building Code section 2306.1 and referenced standard ANSI/TPI 1.

LOAD CASE(S) Standard